

Call For Enquiry  
9667788803

## DRUVISH KITCHEN APPLIANCES

### ***Our Services***

*Bakery Products  
Coffee Machines & Grinders  
Food Preparation Products  
Commercial Refrigeration  
Professional Refrigeration  
Catering Products*

**ALL KITCHEN SOLUTION FOR HO-RE-CA**

[www.druvishkitchenappliances.com](http://www.druvishkitchenappliances.com)



## CREATIVE & CORPORATE IDEAS

### ABOUT OUR COMPANY

Druvish Kitchen Appliances is one of the leading importer of kitchen equipment for hotels and other institutions catering to the needs of food and beverage industries of India. Renowned for its customized service, Druvish Kitchen offers a wide range to the hospitality industry. We have complete range of equipment for kitchens as well as refrigeration equipment for Hotels, Restaurants, Fast Food Joints, Ice Cream Parlours, Coffee Shops, Super Markets, and Food Centers.

### OUR BEST SERVICES

#### CONSULTANCY

We offer complete packages to the hospitality industry including consultancy to Hotels, Restaurants, Fast Food Joints, Ice Cream Parlours, Coffee Shops, Super Markets, and Food Centers, and satisfy all customized needs of our clients.

#### SERVICE

We offer nation wide free installation and after sales service at Bangalore, Jaipur, Hyderabad, Chennai, Ludhiana, Calcutta, Ahmedabad etc. To ensure International quality service, we have a team of trained engineers.

#### PROJECTS

From large catering facilities, exclusive clubs, hotels, international food chains to small food retailers, we are the one single source of supply. Our range of products suits every budget. We value our customers' continued support.

FOLLOW US





# BRANDS







# PC STORAGE CONTAINER



RH 3320 185x185x100 mm 2 Ltrs  
RH 3321 185x185x187 mm 4 Ltrs  
RH 3322 215x215x185 mm 6 Ltrs  
RH 3323 215x215x230 mm 7.5 Ltrs  
RH 3324 256x310x210 mm 11.5 Ltrs  
RH 3325 256x310x320 mm 17.5 Ltrs  
RH 3326 256x310x400 mm 21 Ltrs



RH 3320 - 1 White, Red & Green 2 & 4 Ltrs  
RH 3322 - 1 White, Red & Green 6 & 7.5 Ltrs  
RH 3325 - 1 White, Red & Green 11.5, 17.5 & 21 Ltrs



PC Ingredient Bin  
Item Capacity  
IB 81 81 Ltr.  
IB 102 102 Ltr.



PC Dough Box  
Item Size In MM  
DB 40 655 x 455 x 40  
DB 80 655 x 455 x 80  
DB 150 655 x 455 x 150  
DB - 1 655 x 455



Insulated Food Barrel  
Size: 15, 20, 30, 40, 50Ltrs.

# PC GN PANS

## 1/1 Series



RH 3500 -1 530x325x30 mm Lid  
RH 3500 530x325x65 mm 8.5 Ltrs  
RH 3500 530x325x100 mm 13 Ltrs  
RH 3500 530x325x150 mm 19.5 Ltrs  
RH 3500 530x325x200 mm 25.6 Ltrs

## 1/2 Series



RH 3601 -1 325x265x30 mm Lid  
RH 3601 325x265x65 mm 3.9 Ltrs  
RH 3602 325x265x100 mm 5.9 Ltrs  
RH 3603 325x265x150 mm 8.9 Ltrs  
RH 3604 325x265x200 mm 11.7 Ltrs

## 1/3 Series



RH 3701 -1 325x176x28 mm Lid  
RH 3701 325x176x65 mm 2.4 Ltrs  
RH 3702 325x176x100 mm 3.6 Ltrs  
RH 3703 325x176x150 mm 5.3 Ltrs  
RH 3704 325x176x200 mm 6.9 Ltrs



## 1/4 Series



RH 3505 -1 265x165x28 mm Lid  
RH 3505 265x165x65 mm 1.7 Ltrs  
RH 3506 265x165x100 mm 2.5 Ltrs  
RH 3507 265x165x150 mm 3.7 Ltrs



## 1/6 Series



RH 3605 -1 176x162x28 mm Lid  
RH 3605 176x162x65 mm 1 Ltrs  
RH 3605 176x162x100 mm 1.5 Ltrs  
RH 3605 176x162x150 mm 2.2 Ltrs



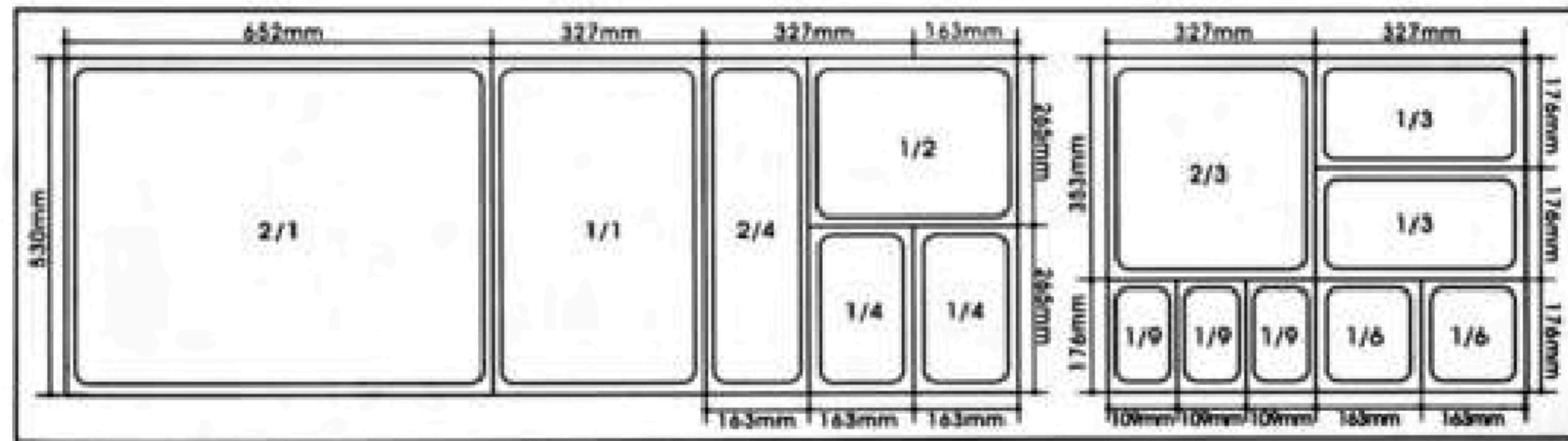
## 1/9 Series



RH 3705 -1 176x108x23 mm Lid  
RH 3705 176x108x65 mm 0.57 Ltrs  
RH 3706 176x108x100 mm 0.85 Ltrs  
RH 3707 176x108x150 mm 1.1 Ltrs



# SS GN PANS



GN Pan 2/1 (650mm x 530mm)

Item	Size In MM	
# 2120	2/1 × 20MM Deep	650 × 530 × 20
# 2140	2/1 × 40MM Deep	650 × 530 × 40
# 2165	2/1 × 65MM Deep	650 × 530 × 65
# 21100	2/1 × 100MM Deep	650 × 530 × 100
# 21150	2/1 × 150MM Deep	650 × 530 × 150
# 21200	2/1 × 200MM Deep	650 × 530 × 200



GN Pan 1/1 (530mm x 325mm)

Item	Size In MM	
# 1120	1/1 × 20MM Deep	530 × 325 × 20
# 1140	1/1 × 40MM Deep	530 × 325 × 40
# 1165	1/1 × 65MM Deep	530 × 325 × 65
# 11100	1/1 × 100MM Deep	530 × 325 × 100
# 11150	1/1 × 150MM Deep	530 × 325 × 150
# 11200	1/1 × 200MM Deep	530 × 325 × 200
# 11000	1/1 Lid	530 × 325



Ice Cream Pan 8/8 (221mm x 211mm)

Item	Size In MM	
# 88150	8/8 x 150MM Deep	221 x 211 x 150
# 88200	8/8 x 200MM Deep	221 x 211 x 200
# 88000	8/8 Lid	221 x 211



GN Pan 1/2 (325mm x 265mm)

Item	Size In MM	
# 1220	1/2 x 20MM Deep	325 x 265 x 20
# 1240	1/2 x 40MM Deep	325 x 265 x 40
# 1265	1/2 x 65MM Deep	325 x 265 x 65
# 12100	1/2 x 100MM Deep	325 x 265 x 100
# 12150	1/2 x 150MM Deep	325 x 265 x 150
# 12200	1/2 x 200MM Deep	325 x 265 x 200
# 12000	1/2 Lid	325 x 265



GN Pan 1/3 (325mm x 176mm)

Item	Size In MM	
# 1365	1/3 x 65MM Deep	325 x 176 x 65
# 13100	1/3 x 100MM Deep	325 x 176 x 100
# 13150	1/3 x 150MM Deep	325 x 176 x 150
# 13200	1/3 x 200MM Deep	325 x 176 x 200
# 13000	1/3 Lid	325 x 176



GN Pan 2/3 (354mm x 325mm)

Item	Size In MM	
# 2365	2/3 x 65MM Deep	354 x 325 x 65
# 23100	2/3 x 100MM Deep	354 x 325 x 100
# 23150	2/3 x 150MM Deep	354 x 325 x 150
# 23000	2/3 Lid	354 x 325



GN Pan 2/4 (530mm x 162mm)

Item	Size In MM	
# 2465	2/4 x 65MM Deep	530 x 162 x 65
# 24100	2/4 x 100MM Deep	530 x 162 x 100
# 24150	2/4 x 150MM Deep	530 x 162 x 150
# 24000	2/4 Lid	530 x 162



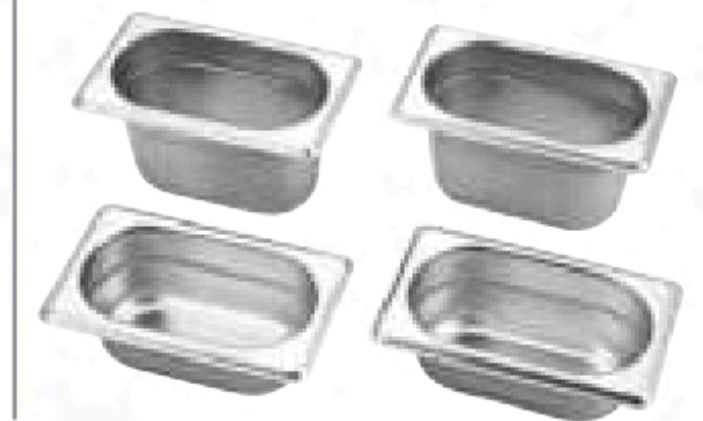
GN Pan 1/4 (265mm x 162mm)

Item	Size In MM	
# 1465	1/4 x 65MM Deep	265 x 162 x 65
# 14100	1/4 x 100MM Deep	265 x 162 x 100
# 14150	1/4 x 150MM Deep	265 x 162 x 150
# 14200	1/4 x 200MM Deep	265 x 162 x 200
# 14000	1/4 Lid	265 x 162



GN Pan 1/6 (176mm x 162mm)

Item	Size In MM	
# 1665	1/4 x 65MM Deep	176 x 162 x 65
# 16100	1/4 x 100MM Deep	176 x 162 x 100
# 16150	1/4 x 150MM Deep	176 x 162 x 150
# 16200	1/4 x 200MM Deep	176 x 162 x 200
# 16000	1/4 Lid	176 x 162



GN Pan 1/9 (176mm x 108mm)

Item	Size In MM	
# 1965	1/9 x 65MM Deep	176 x 108 x 65
# 19100	1/9 x 100MM Deep	176 x 108 x 100
# 19150	1/9 x 150MM Deep	176 x 108 x 150
# 19000	1/9 Lid	176 x 108



Perforated GN Pan 1/1 (530mm x 325mm)

Item	Size In MM	
# 1165	1/1 x 65MM Deep	530 x 325 x 65
# 11100	1/1 x 100MM Deep	530 x 325 x 100
# 11150	1/1 x 150MM Deep	530 x 325 x 150

Perforated GN Pan 1/2 (325mm x 265mm)

Item	Size In MM	
# 1265	1/2 x 65MM Deep	325 x 265 x 65
# 12100	1/2 x 100MM Deep	325 x 265 x 100
# 12150	1/2 x 150MM Deep	325 x 265 x 150



Item	Size In MM
------	------------

# 181810	250MM Deep	450 x450 x 250
# 181812	300MM Deep	450 x450 x 300

## SS SINK





# COFFEE URN



Coffee Urn W/NL Legs  
Item Capacity  
CUNL 12 12 Ltr.



Coffee Urn W/NL Legs  
Item Capacity  
CUNL 19 19 Ltr.



Coffee Urn W/CP Legs  
Item Capacity  
CUCP 12 12 Ltr.



Coffee Urn W/YL Legs  
Item Capacity  
CUYL 12 12 Ltr.



Coffee Urn W/CL Legs  
Item Capacity  
CUCL 12 12 Ltr.



Coffee Urn W/CL Legs  
Item Capacity  
CUCL 19 19 Ltr.

# JUICE & CEREAL DISPENSER



Cereal Dispenser  
Item Capacity  
CD 4 4 Ltr.



Double Cereal Dispenser  
Item Capacity  
CD 44 4 Ltr. x 2 Ltr.



Triple Cereal Dispenser  
Item Capacity  
CD 444 4 Ltr. x 3



Cereal Dispenser  
Item Capacity  
CD 7 7 Ltr.



Double Cereal Dispenser  
Item Capacity  
CD 77 7 Ltr. x 2



Juice Dispenser  
Item Capacity  
JD 3 3 Ltr.



Double Juice Dispenser  
Item Capacity  
JD 33 3 Ltr. x 2



Juice Dispenser  
Item Capacity  
JD 7 7 Ltr.



Double Juice Dispenser  
Item Capacity  
JD 77 7 Ltr. x 2



Juice Dispenser W/NL Legs  
Item Capacity  
JDNL 12 12 Ltr.



Plastic Dispenser  
Item Capacity  
PD 3 3 Ltr.



Double Plastic Dispenser  
Item Capacity  
PD 33 3 Ltr. x 2







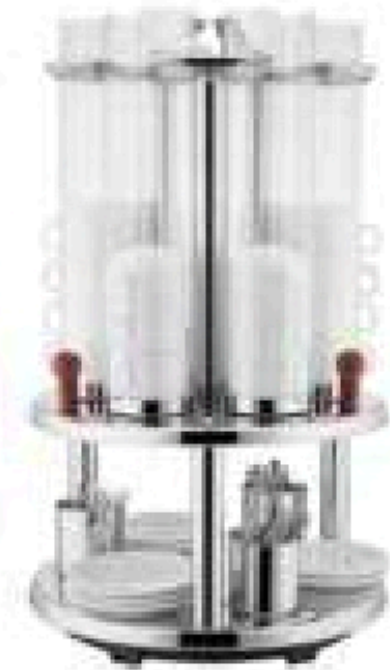
X23598  
Marbella Milk Urn  
5 Ltr



X23673  
Coffee Urn  
10.5 Ltr



23888  
Merabella Half Moon Beverage  
Dispenser  
5 Ltr.x2



U09-1000  
Cups Dispenser Revolving



23959  
Coffee Decanter  
Cap: 1.8Ltr



X88189L - 2CIBT  
Cooling Display Set W/PC Roll Top Cover  
Capacity: 2 Ltrs.



X88681 - 9  
Round Electric Chafer W/ Glass Lid  
Cap: 6.8Ltr.  
Power: 420W



X83621 - 9  
SS Round Electric Chafer W/ Glass Lid  
Cap: 6.8Ltr.  
Power: 840W



23588  
Merabella Beverage Dispenser  
5 Ltr.



23588x2  
Merabella Double Beverage  
Dispenser  
5 Ltr.x2



23688T  
Beverage Dispenser  
8 Ltr.



23688T x 2  
Double Beverage Dispenser  
8 Ltr. x 2



X84187 - 9  
Rectangular Electric Chafer W/ PC Flip Top Cover  
Cap: 13 Ltr.  
Power: 760W



X83128 - 9  
Stainless Steel Electric Chafer  
Cap : 13.5 Ltr.  
Power: 760W



83388  
SS Electric Soup Warmer  
Cap : 10 Ltr.  
Power: 380W



U13 - 1100  
Cereal Dispenser Single  
4 Ltr.



U13 - 1200  
Cereal Dispenser Double  
4 Ltr.x2



U13 - 1300  
Cereal Dispenser Triple  
4 Ltr.x3



X23577 x 3  
Cereal Dispenser Revolving  
4 Ltr.x3



87328 - 9  
Electric Soup Warmer  
Cap: 13 Ltr.  
Power: 450W

Available  
in SS  
Lid



E07 - 10019  
Galena Electric Soup Warmer  
Cap: 13 Ltr.  
Power: 420W



E07 - 20019  
Brown Galena Electric Soup Warmer  
Cap: 13 Ltr.  
Power: 420W



# BAIN MARIE



# FOOD WARMER, MILK & WATER BOILER



Electric Fiber Chafer (Roll Top Cover)  
Item Capacity  
EFC 10 10 Ltr.



Electric SS Chafer (Flip Top Cover)  
Item Capacity  
ESSC 10 10 Ltr.



Electric SS Chafer (SS Cover)  
Item Capacity  
ESSC 10 10 Ltr.



2 Pan (1/2 150mm)  
Size: 570×370×280mm  
Power: 1.2Kw



3 Pan (1/3 150mm)  
Size: 570×370×280mm  
Power: 1.2Kw



2 Pan W/ Glass & Valve (1/2 100mm)  
Size: 635×350×360mm  
Power: 1.5Kw



3 Pan W/ Glass & Valve (1/2 100mm)  
Size: 940×350×360mm  
Power: 1.5Kw



4 Pan W/ Glass & Valve (1/2 100mm)  
Size: 1200×350×360mm  
Power: 1.5Kw



5 Pan W/ Glass & Valve (1/2 100mm)  
Size: 1450×350×360mm  
Power: 1.8Kw



Electric Round SS Chafer (Roll Top Cover)  
Item Capacity  
ERSSC 10 10 Ltr.



Insulated water boiler  
Item Capacity  
WB 20 20 Ltr.  
Power 2000w



Insulated water boiler  
Item Capacity  
IWB 8 8 Ltr.  
Power 1800w



Milk Boiler  
Item Capacity  
EWB 15 5 Ltr./Milk &  
10 Ltr./Water



Electric Water Boiler  
Item Capacity  
EWB 10 10 Ltr.



Electric Water Boiler  
Item Capacity  
EWB 16 16 Ltr.



Electric Water Boiler  
Item Capacity  
EWB 20 20 Ltr.



Electric Water Boiler  
Item Capacity  
EWB 30 30 Ltr.



6 Pan W/ Valve  
Size: 690×590×225mm  
Power: 1.5Kw



Electric Bain Marie  
Item - EBM 150  
Size: 570×370×230mm  
Power: 1200 Watts





## SOUP WARMER



Soup Warmer (Fiber)  
Item SWF 10 Capacity 10 Ltr.



Soup Warmer (Metal)  
Item SWM 10 Capacity 10 Ltr.



Soup Warmer (Premium)  
Item SWP 10 Capacity 13 Ltr.



Soup Warmer (SS)  
Item SWSS 10 Capacity 10 Ltr.



Soup Warmer (Rose Gold)  
Item SWRG 10 Capacity 10 Ltr.



Soup Warmer (Gold)  
Item SWG 10 Capacity 10 Ltr.

## WARMING STATION



Dish Warmer Table Top  
Size: 560 × 305 × 45 mm  
Power: 350w  
Temp. Range: 0 - 80 °c



Dish Warmer Sunk-In  
Size: 915 × 457 × 60 mm  
Power: 600w  
Temp. Range: 0 - 80 °c

## LAMP WARMER



Retractable Head Lamp  
(Rose Gold & SS)  
Size: Ø 190, H 600 - 1800 mm  
Power: 250W



Silver (Adjustable Height)  
Size: 425 × 350 × 780 mm  
Power: 250w × 2



Standing Lamp SS  
Size: Ø 300 × 645 mm  
Power: 250w



Standing Lamp Rose Gold  
Size: Ø 300 × 645 mm  
Power: 250w



2 Head Lamp Rose Gold  
Size: 610 × 508 × 600 mm  
Power: 1100w



2 Head Lamp SS  
Size: 610 × 508 × 600 mm  
Power: 1100w



Premium 1 Head  
Size: 530 × 355 × 670 mm  
Power: 500w



Premium 2 Head  
Size: 780 × 530 × 700 mm  
Power: 1000w



Premium 3 Head  
Size: 1070 × 530 × 700 mm  
Power: 1400w



Delux 1 Head  
Item ELW 01 Size 730 × 500 × 700 mm



Delux 2 Head  
Item ELW 02 Size 730 × 500 × 700 mm



Delux 3 Head  
Item ELW 03 Size 1070 × 500 × 700 mm





# CONVEYOR PIZZA OVEN



Electric Conveyer Pizza Oven, 12"  
Power: 5.8 ~ 6.9Kw, 220v  
Output: 12" Pizza, 16 per hour  
Size of Chain: 1040x355mm Depth  
Size of Shape: 1500x600x430mm



Electric Conveyer Pizza Oven, 18"  
Power: 7.7Kw, 380v  
Output: 18" Pizza, 16 per hour  
Size of Chain: 1500x514mm Depth  
Size of Shape: 2080x760x430mm



Gas Conveyer Pizza Oven, 18"  
Power: 0.1Kw, 220v  
Size of Shape: 1560x750x430mm  
Size of Work Station: 500x1450mm

# ELECTRIC STONE PIZZA OVEN



Pizza Oven Small, EP-01  
Size: 560x570x280mm  
Stone Size: 400x400mm  
Power: 2Kw



Pizza Oven Small Double, EP-02  
Size: 560x570x440mm  
Stone Size: 400x400mm x 2  
Power: 3Kw



Pizza Oven Small, AMS-01  
Size: 685x660x330mm  
Stone Size: 500x500mm  
Power: 2.5Kw



Pizza Oven, AMS-02  
Size: 685x660x590mm  
Stone Size: 500x500mm  
Power: 5Kw



Pizza Oven Single Deck Single Tray, RH-11  
Size: 930x630x400mm  
Stone Size: 483x635mm  
Power: 3.2Kw



Pizza Oven Single Deck Single Tray, EPO - 11  
Size: 900x570x360mm  
Stone Size: 400x600mm  
Power: 3.2Kw



Pizza Oven Double Deck Double Tray, RH-22  
Size: 930x630x800mm  
Stone Size: 483x635mm x 2  
Power: 6.4Kw



Pizza Oven Single Deck Two Tray, RH-12  
Size: 1260x820x560mm  
Stone Size: 483x635mm x 2  
Power: 6.6Kw

WITH  
DIGITAL  
TIMER





# GAS BAKING OVEN



1 Deck 1 Tray, GBO11  
Dimension: 960x600x500mm  
Chamber: 650x420x220mm  
Power: 0.10Kw

AVAILABLE  
WITH  
STONE



1 Deck 2 Tray, GBO12  
Dimension: 1300x890x630mm  
Chamber: 870x650x230mm  
Power: 0.10Kw

AVAILABLE  
WITH  
STONE



3 Deck 6 Tray, GBO 36  
Dimension: 1300x840x1720mm  
Chamber: 870x650x230mm  
Power: 0.30Kw



2 Deck 4 Tray, GBO 24  
Dimension: 1300x890x1410mm  
Chamber: 870x650x230mm  
Power: 0.20Kw

# GAS BAKING OVEN



1 Deck 3 Tray, GBO13  
Dimension: 1755x995x660mm  
Chamber: 1305x700x230mm  
Power: 0.2Kw



2 Deck 6 Tray, GBO 26  
Dimension: 1755x995x1405mm  
Chamber: 1305x700x230mm  
Power: 0.3Kw



3 Deck 9 Tray, GBO 39  
Dimension: 1755x995x1725mm  
Chamber: 1305x700x230mm  
Power: 0.4Kw



2 Deck 4 Tray With Proofer, GBOP 24  
Dimension: 1310x820x1990mm  
Chamber: 870x650x230mm  
10 Tray Proofer



# ITALIAN COFFEE MACHINES



LA-01 *La Macchino*

Power 3200 w Voltage/Hz 220V~50 Hz Size 650X565X525 mm

## Description

- Italian rotary pump with 9bar pressure.
- Real time monitoring of extraction pressure.
- Dual boilers Patent Technology: One 550 ml SS boiler for making coffee, another is 5.25L SS primary and secondary boiler for making steam and hot water.
- Digital Temperature Control Technology (DTCD), temperature difference can be controlled within + 1°C.
- With LED illuminator, temperature and time can be adjusted when making coffee.
- Automatic filling and drainage function.
- Inner copper pipes, fast and stable heat conduction.



## Description

- Italian rotary pump with 9 bar pressure
- Real time monitoring of extraction pressure.
- Triple boilers Patent Technology: two 550ml SS boiler for making coffee, another is 10.5 L SS primary and secondary boiler for making steam and hot water.
- Digital Temperature Control Technology (DTCD), temperature difference can be controlled within + 1°C.
- With LED illuminator, temperature and time can be adjusted when making coffee, with flowmeter can set flowing capacity.
- Automatic filling and drainage function.
- Inner copper pipes, fast and stable heat conduction.



LA-02 *La Macchino*

Power 4200 w Voltage/Hz 220V~50 Hz Size 850X565X525 mm



CG-01

## Description

- 64 mm Stainless Steel blade.
- Strong hardness grinding discs, fast grinding and durable.
- Inching button for powder output, manual control the amount flexibly.
- Adjustable roughness of 1-11 gear grinding for different kinds of coffee.
- Transparent bean hopper with 1.2 kg capacity.

Size 270x220x550 mm Power 350 w Voltage/Hz 220V~50 Hz



CG-02

## Description

- 60 mm 304 Stainless Steel grinder flat blade.
- Luxury LED control panel.
- Adjustable thickness of coffee 1-19 gears.
- One or two cups of coffee can be chosen.
- One cup is just 6 seconds.
- Two cups is just 12 seconds.
- Anti bean jumping hopper with 1 kg.
- With strong aluminum body.
- Copper motor with more long life performance.

Size 240x155x470 mm Power 300 w Voltage/Hz 220V~50 Hz



CG-03

## Description

- 60 mm metal alloy hardness grinder flat blade.
- Adjustable thickness of coffee 1-8 gears.
- Anti bean jumping hopper 250 gm.
- With aluminum shell and ABS body.
- Copper motor with more long life performance.
- Portable, suitable for home use.

Size 360x145x260 mm Power 180 w Voltage/Hz 220V~50 Hz

# BAKERY OVEN & DISPLAY



EMO - 25 F  
Commercial Microwave Oven  
Membrane Touch Control  
Size : 508X356X254 mm  
Cap : 25 Ltrs.  
Power: 1000 w



Cake Icing Machine  
Size: 550x410x580 mm  
Cake Height : 3~18 cm  
Dia: 36 cm  
Power: 60 W



Cake Showcase  
Size: 1200x620x1300 mm  
Temp. : 4~8 C  
Power: 720 w

## Gas Convection Oven



Gas Convection Oven (5 Tray)  
Dimension: 900x1375x780 mm  
Power: 650 w ~ 220 v



Gas Convection Oven (10 Tray)  
Dimension: 900x1375x1470 mm  
Power: 1.2 Kw ~ 220 v

## Spiral Mixer



- 50 kgs Spiral Mixer Computer Panel
- Double Motor Double Speed
- Size : 1120x720x1300 mm
- Flour:50 kgs, Dough : 80 kgs, Bowl: 130 L
- 380V - 3 Phase - 6 Kw
- Bowl Speed: 17.2 R/M
- Hook Speed: 125/250 - 17.2 R/M
- N.W : 395 Kgs /G.W : 420 Kgs

## Rotary Oven



- 10 Trays Rotary Oven
- Gas/Diesel Burner
- Tray size 600x 400mm (24"x16")
- Power Source : Gas / Diesel
- Fully Stainless Steel
- Steam option available
- Auto-cut function
- No Colour variation
- Digital Temperature Control
- Size:1080x1400x1960 mm
- 220 V - 50 HZ - 1.5 Kw



# ELECTRIC BAKING OVEN



1 Deck 1 Tray, EBO 11  
Dimension: 930x630x400mm  
Chamber: 645x510x150mm  
Power: 3.2Kw



1 Deck 2 Tray, EBO12  
Dimension: 1235x800x500mm  
Chamber: 860x660x200mm  
Power: 6.6Kw



2 Deck 4 Tray, EBO 24  
Dimension: 1235x800x1010mm  
Chamber: 860x660x200mm  
Power: 13.2Kw



2 Deck 2 Tray, EBO 22  
Dimension: 930x630x800mm  
Chamber: 645x510x150mm  
Power: 6.4Kw



3 Deck 6 Tray, EBO 36  
Dimension: 1200x820x1450mm  
Chamber: 860x660x220mm  
Power: 19.6Kw



# ELECTRIC BAKING OVEN & PROOFER



3 Deck 9 Tray, EBO 39  
Dimension: 1660x820x1530mm  
Chamber: 1300x640x215mm  
Power: 25.2Kw, 380v



2 Deck 4 Tray, EBOP 24  
Dimension: 1310x820x1845mm  
Chamber: 820x1310x1840mm  
Power: 14.6Kw



Aluminium Baking Tray  
Size: 600x400x30/50mm



Convection Oven, 4 Tray  
Size: 595x530x570mm  
Power: 2.6Kw



Proofer 6 Tray, EPO6



Proofer 13 Tray, EPO13



Proofer 26 Tray, EPO 26



Proofer 16 Tray, EPO 16



# PLANETARY MIXER



Plantary Mixers, B5  
Cap.: 5Ltrs.  
Power: 300w  
Max Kneeding: 0.5Kgs



Plantary Mixers, B7  
Cap.: 7Ltrs.  
Power: 370w  
Max Kneeding: 0.7Kgs



Plantary Mixers, B10  
Cap.: 10Ltrs.  
Power: 500w  
Max Kneeding: 1.5kgs



Plantary Mixers, B20  
Cap.: 20Ltrs.  
Power: 1.1Kw  
Max Kneeding: 4kgs



Plantary Mixers, B30  
Cap.: 30Ltrs.  
Power: 1.5Kw  
Max Kneeding: 8Kgs



Plantary Mixers, B40  
Cap.: 40Ltrs.  
Power: 2.2Kw, 380v  
Max Kneeding: 12Kgs



Plantary Mixers, B60  
Cap.: 60Ltrs.  
Power: 3.7Kw, 380v  
Max Kneeding: 18Kgs

# SPIRAL MIXER



Spiral Mixers, H10  
Cap.: 10Ltrs.  
Power: 0.75Kw  
Max Kneeding: 4Kgs



Spiral Mixers, H20  
Cap.: 20Ltrs.  
Power: 1.1Kw  
Max Kneeding: 8Kgs



Spiral Mixers, H30  
Cap.: 30Ltrs.  
Power: 1.5Kw  
Max Kneeding: 12Kgs



Spiral Mixers, H40  
Cap.: 40Ltrs.  
Power: 2.2Kw  
Max Kneeding: 16Kgs



Spiral Mixers, H50  
Cap.: 50Ltrs.  
Power: 2.8Kw, 380v  
Max Kneeding: 20Kgs



Spiral Mixers, H60  
Cap.: 60Ltrs.  
Power: 3.7Kw, 380v  
Max Kneeding: 25Kgs



Dough Maker  
HMJ15: 620x400x780mm,  
15Ltrs., 200Kg/hr  
HMJ25: 720x470x840mm,  
25Ltrs., 240Kg/hr





# BREAD SLICER & DOUGH SHEETER



Bread Slicer (SS)  
Size: 760x560x780mm  
Power: 370W  
Thickness of Slice: 12mm  
No of Slice: 31



Bread Slicer (Heavy)  
Size: 730x680x900mm  
Power: 370W  
Thickness of Slice: 12mm  
No of Slice: 31



Pizza Sheeter, T40  
Size: 370x565x715mm  
Power: 390W  
Short Roller: Ø25xØ45x300  
Longe Roller: Ø48xØ25x422



Dough Sheeter Table Top, TSP 520  
Outline Size: 2400x920x650mm  
Conveyer Belt Size: 500x1980mm  
Power: 550W  
Roller: Ø89  
Roller Range: 1~40mm  
Max Roll Weight: 5kgs



Dough Sheeter Standing, E 520  
Outline Size: 2550x1000x1280mm  
Conveyer Belt Size: 500x1980mm  
Power: 750W  
Roller: Ø73  
Roller Range: 1~45mm  
Max Roll Weight: 5kgs



Dough Rounder Divider  
Size: 640x540x2100mm  
Power: 750W  
Dough Weight: 30~100gm



Dough Divider  
Size: 410x520x1240mm  
Power: 750W  
Dough Weight: 100~180gm

# ELECTRIC FRYER



Single Fryer, 4L  
Size: 217x400x290mm  
Power: 2.0Kw  
Cap.: 4 Ltrs.



Single Fryer, 8L  
Size: 290x460x310mm  
Power: 2.5Kw  
Cap.: 5.5 Ltrs.



Single Fryer, 6L  
Size: 265x430x295mm  
Power: 2.8Kw  
Cap.: 6 Ltrs.



Double Fryer, 82  
Size: 580x460x310mm  
Power: 2.5Kw x 2  
Cap.: 5.5 Ltrs. x 2



Single Fryer, 8L  
Size: 265x435x345mm  
Power: 2.8Kw  
Cap.: 8 Ltrs.



Double Fryer 8Lx2  
Size: 460x530x230mm  
Power: 4Kw x 2  
Cap.: 8 Ltrs. x 2



1/1 Single Fryer, 18L  
Size: 660x340x160mm  
Power: 3Kw  
Cap.: 12 Ltrs



Single Fryer, 10L  
Size: 280x470x350mm  
Power: 3Kw  
Cap.: 10 Ltrs.



Double Fryer, 10Lx2  
Size: 570x470x350mm  
Power: 3Kw x 2  
Cap.: 10 Ltrs. x 2



Single Fryer, 30L  
Size: 600x580x420mm  
Power: 6.5Kw  
Cap.: 30 Ltrs



Single Fryer, 13L  
Size: 310x480x350mm  
Power: 5Kw  
Cap.: 13 Ltrs.



Single Fryer, 16L  
Size: 340x560x380mm  
Power: 5Kw  
Cap.: 16 Ltrs.



Standing Electric Fryer, 28L  
Size: 400x800x1110mm  
Power: 18Kw, 380v  
Cap.: 28 Ltrs.



# GAS FRYER & GRILLER



Standing Gas Fryer, 26L  
Size: 400x700x1100mm  
Cap.: 26 Ltrs.



Single Gas Fryer, 71  
Size: 290x520x480mm  
Cap.: 6 Ltrs.



Double Gas Fryer, 72  
Size: 570x520x480mm  
Cap.: 6 Ltrs. x 2



Single Gas Fryer, 71A  
Size: 310x660x550mm  
Cap.: 16 Ltrs.



Double Gas Fryer, 72A  
Size: 616x660x550mm  
Cap.: 16 Ltrs. x 2



Single Contact Grill, 811  
Size: 370x305x190mm  
Power: 1.8Kw



Jumbo Contact Grill, 811E  
Size: 425x370x190mm  
Power: 2.2Kw



Double Contact Grill, 813  
Size: 565x370x190mm  
Power: 1.8Kw x 2



Jumbo Panini Grill, 811EB  
Size: 410x305x210mm  
Power: 2.2Kw



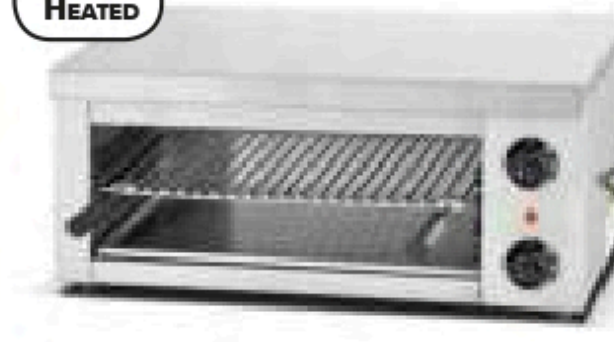
Double Jumbo Contact Grill, 813E  
Size: 820x395x190mm  
Power: 2.2Kw x 2

# SALAMANDER & TOASTER



Electric Salamander, 936  
Size: 580x390x390mm  
Power: 2.2Kw

TOP AND  
BOTTOM  
HEATED



Electric Salamander, 935  
Size: 580x375x380mm  
Power: 2.2Kw



Electric Salamander, 938  
Size: 615x305x280mm  
Power: 2.2Kw



Electric Salamander, 937  
Size: 790x455x490mm  
Power: 4Kw



Electric Lift Salamander, 450S  
Size: 450x520x500mm  
Power: 2.8Kw



Electric Lift Salamander, 600S  
Size: 600x520x500mm  
Power: 4Kw



4 Slice Toaster  
Size: 370x210x225mm  
Power: 2.3Kw



6 Slice Toaster  
Size: 460x210x225mm  
Power: 3.3Kw



Bun Toster  
Size: 406x660x290mm  
Power: 2.4Kw



Conveyor Toaster, TT-150  
Size: 290x420x390mm  
Power: 1.32Kw



Conveyor Toaster, TT-300  
Size: 370x420x390mm  
Power: 1.92Kw



Vertical Bun Toaster  
Size: 425x295x615mm  
Power: 2.0Kw



# GRIDDLE



Gas Griddle, 718  
Size: 550x514x540mm



Gas Griddle, 718B  
Size: 550x514x540mm



Gas Griddle, 720  
Size: 730x565x540mm



Gas Griddle, 722  
Size: 730x565x540mm



Electric Griddle, 818  
Size: 550x450x235mm  
Power: 3Kw



Electric Griddle, 818B  
Size: 550x450x235mm  
Power: 3Kw



Electric Griddle, 820  
Size: 730x520x235mm  
Power: 4.4Kw



Electric Griddle, 822  
Size: 730x520x235mm  
Power: 4.4Kw

# PASTA BOILER & RICE STEAMER



Pasta Boiler 4 Compartment  
Size: 180x180x130mm  
Power: 4Kw



Pasta Boiler 6 Compartment  
Size: 210x190x130mm  
Power: 6Kw



Rice Cooking Machine, 4 Tray  
Dia: 700x600x810mm  
Power: 1.1Kw



Rice Cooking Machine, 8 Tray  
Dia: 720x640x1170mm  
Power: 9Kw



Rice Cooking Machine, 12 Tray  
Dia: 720x640x1550mm  
Power: 12Kw



# WAFFLE MAKERS



# WAFFLE MAKERS



Donut Waffle Maker  
Size: 410×385×320mm  
Power: 1.5Kw



Fish Waffle Maker  
Size: 380×270×270mm  
Power: 1.5Kw



French Waffle Maker  
Size: 380×270×270mm  
Power: 1.5Kw



Loly Waffle Maker  
Size: 450×350×280mm  
Power: 1.75Kw



Biscit Waffle Maker  
Size: 390×340×245mm  
Power: 1.55Kw



Square 2 Waffle Maker  
Size: 410×305×240mm  
Power: 2Kw



Square 4 Waffle Maker  
Size: 315×410×240mm  
Power: 1.75Kw



Quad Round Waffle Maker  
Size: 315×410×240mm  
Power: 1.75Kw



Gas Waffle Maker  
Size: 370×220×210mm



Tilting Waffle Maker  
Size: 340×240×220mm  
Power: 1.4Kw



Round Waffle Maker  
Size: 250×350×260mm  
Power: 1Kw



Double Round Waffle Maker  
Size: 500×350×260mm  
Power: 2Kw



Heart Waffle Maker  
Size: 360×252×230mm  
Power: 1Kw



Square Rotary Waffle Maker  
Size: 430×260×290mm  
Power: 1.28Kw



Canapes Maker  
Size: 390×340×245mm  
Power: 1.55Kw



Square Cone Maker  
Size: 410×305×240mm  
Power: 1.75Kw



Egg Waffle Maker  
Size: 225×420×290mm  
Power: 1.4Kw



Round Rotary Waffle Maker  
Size: 490×250×350mm  
Power: 1.3Kw



Round Cone Maker  
Size: 280×380×230mm  
Power: 1Kw



Double Round Cone Maker  
Size: 570×380×230mm  
Power: 2Kw



Pie Maker  
Size: 325×300×185mm  
Power: 1Kw



Crepe Maker  
Size: 520×450×220mm  
Power: 3Kw



Pizza Pie Maker  
Size: 305×550×220mm  
Power: 1.85Kw



UFO Burger  
Size: 490×250×350mm  
Power: 1.3Kw



# COFFEE MACHINE & CHOCOLATE FOUNTAIN



Espresso Coffee Machine  
Water Tank: 1.7Ltr  
Power: 3Kw  
Pressure: 15 Bar



Coffee Grinder  
Power: 180W



Chocolate Fountain, 3Tier  
Height: 38cm  
Power: 170W



Chocolate Fountain, 5Tier  
Height: 60cm  
Power: 230W



Hot Chocolate Warmer  
Power: 400W  
Cap: 5Ltr.



SS Chocolate Fountain, 4Tier  
Height: 60cm  
Power: 265W



SS Chocolate Fountain, 5Tier  
Height: 80cm  
Power: 310W

# POP CORN & CANDY FLOSS MAKER



Hot Chocolate/Cheese  
Cap.: 2Ltrs.  
Power: 300W



Chocolate Stove, 3Pan  
Size: 205x560x225mm  
Power: 1.5W



Chocolate Stove, 2Pan  
Size: 205x400x225mm  
Power: 1Kw



Chocolate Melting Machine  
Size: 350x435x170mm  
Power: 1Kw



Candy Floss W/Cart  
Size: 935x520x890mm  
Power: 1.03Kw



Gas Candy Floss  
Size: 530x530x415mm



Electric Candy Floss  
Size: 530x530x415mm  
Power: 1.03Kw



Electric Egg Roll Machine  
Size: 345x155x235mm  
Power: 1.4Kw



Gas Egg Roll Machine  
Size: 510x275x410mm



Hot Dog Grill (7 Rollers)  
Size: 570x320x445mm  
Power: 1.05Kw



Gas Pop Corn Machine  
Size: 570x380x230mm  
Power: 30W



Pop Corn Machine  
Size: 560x420x760mm  
Power: 1.5Kw



Pop Corn Machine with Cart  
Size: 940x450x1540mm  
Power: 1.5Kw



# MEAT PROCESSING MACHINE



Meat Mincer, #12  
Power: 850W  
Cap.: 120Kg/Hr.

Meat Mincer, #22  
Power: 1.1Kw  
Cap.: 150Kg/Hr.

Meat Mincer, #32  
Power: 1.5Kw  
Cap.: 400Kg/Hr.

Meat Mincer, #42  
Power: 3Kw  
Cap.: 600Kg/Hr.



Sausage Stuffer, SV - 5  
Size: 300x235x650mm  
Cap: 5Ltrs.



Sausage Stuffer, SV - 7  
Size: 300x300x795mm  
Cap.: 7Ltrs.



Sausage Stuffer, SV - 10  
Size: 420x310x660mm  
Cap.: 10Ltrs.



Hydraulic Sausage Stuffer,  
SF - 15L  
Size: 600x400x1240mm  
Cap.: 15Ltrs.



Sausage Tying Machine  
Dia: 900x600x1090mm  
Power: 0.37Kw

# MEAT& VEGETABLE PROCESSING MACHINE



Bone Saw Machine  
Power: 1.1Kw  
Table Size: 495x385mm



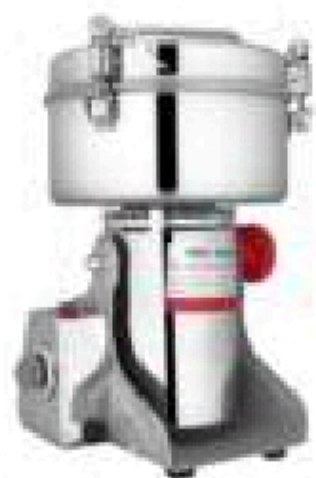
Meat Slicer (250mm)  
Size: 575x465x415mm  
Power: 150w  
Thickness: 0.2 - 12mm, Wider 180mm



Vegetable Cutter (5 Knives )  
Blades Available for Dicing & French Fries



Bowl Chopper, QXP5  
Power: 550W  
Size: 605x462x500mm  
Cap.: 5Ltrs.



Herb Grinder  
Size: 300ml, 500ml &  
1000ml  
Power: 2.8Kw



Fine Chopper  
Size: 300x300x600mm  
Cap.: 60Kgs  
Power: 1Kw



Potato Peeler  
SY8: 490x480x800mm,  
8Ltrs., 240-480Kg/hr  
SY15: 570x535x900mm,  
15Ltrs., 480-900Kg/hr



Bowl Chopper, QXP30  
Power: 550W  
Size: 770x710x960mm  
Cap.: 20Ltrs.



Meat Ball Machine  
Size: 750x450x1250mm  
Power: 1.1Kw



Filling Mixer  
Size: 670x510x1100mm  
Power: 0.75Kw



Salting Machine  
Size: 710x400x830mm  
Cap: 35Ltrs.  
Power: 350W



# INDUCTION



Round Induction Cooker  
220-240V, 2200Watts  
Size Ø285mm



Square Induction Cooker (Built In)  
220-240V, 2200Watts  
Size (L)300x(W)300



Comm. Induction Cooker (Built In)  
Size: 400x400x180mm  
Power: 3500W



Eco Commercial Induction Cooker  
Size: 425x350x110mm  
Power: 3500W



Commercial Induction Cooker  
Size: 415x326x110mm  
Power: 3500W



Commercial Induction Cooker, Wok  
Size: 415x326x110mm  
Power: 3500W



Commercial Induction Cooker  
Size: 450x350x200mm  
Power: 5000W



Commercial Induction Cooker, Wok  
Size: 450x350x200mm  
Power: 5000W

# WARMERS



Premium Food Warmer  
601 660x480x610mm, 1.5Kw  
602 900x440x630mm, 1.8Kw



Deluxe Food Warmer, 2P  
Size: 660x480x630mm  
Power: 800W



Food Warmer DH454  
Size: 540x365x415mm  
Power: 600W



Food Warmer DH750  
Size: 750x365x415mm  
Power: 1000W



Cup Warmer Cart  
Size: 340x550x860mm  
Power: 1.5KW



Double Plate Warmer, 100 Plates  
Size: 500x900x950mm  
Power: 800W



Single Plate Warmer, 50 Plates  
Size: 460x560x950mm  
Power: 400W



Plate Warmer (Built In),  
50 Plates  
Size: 480x760mm  
Power: 400W



Plate Warmer Table Top  
35~40 Plates  
Size: 460x460x575mm  
Power: 650W



# STEAMER & DEHYDRATOR



# ROTTISSERIE & SHAWARMA





# ICE CUBE & ICE CREAM MAKER



Gelato Machine  
Size: 435×490×640mm  
Power: 1400W



Table Top Softy Machine  
Size: 520×695×1680mm  
Power: 2000W



Ice Cube Machine  
Size: 440×570×800mm  
Power: 0.28Kw



Fried Ice Cream Machine  
Size: 680×520×730mm  
Power: 1300W



Ice Cream Machine  
Size: 540×615×1410mm  
Power: 2Kw  
Output: 25-30L

# COLD DISPLAY COUNTER



Slush Machine  
Cap.: 12Ltrs. x 2  
Size: 430×530×800mm  
Power: 890W



Cold Juice Dispensers  
Cap.: 18Ltrs.  
Size: 265×490×715mm  
Power: 300W



Cold Juice Dispensers  
Cap.: 18Ltrs. x 2  
Size: 410×450×715mm  
Power: 300W



Cold Juice Dispensers  
Cap.: 18Ltrs. x 3  
Size: 610×465×715mm  
Power: 350W



Eco Pastry Display  
Cap.: 100Ltrs.  
Size: 705×472×687mm  
Power: 195W



Ice Cream Counter  
Defrost: Automatic  
Cap.: 4x1/3 GN Pans  
Size: 805×670×360mm  
Power: 140W



Cake Display (Revolving)  
Size: Ø 504×687mm  
Power: 190W



Sushi Showcase, 5 Pan  
Size: 1307×450×330mm  
Power: 180W



Salad Counter, 6 Pan  
Size: 1500×395×225mm  
Power: 125W



BLENDERS, JUICE & ICE CRUSHER



JTC OmniBlend®



JTC Jar, 1.5 Ltrs.



JTC Jar, 2 Ltrs.



TM - 788A  
Power: 3HP  
Cap.: 1.5Ltrs.



TM - 788  
Power: 3HP  
Cap.: 2Ltrs.



TM - 767  
Power: 3HP  
Cap.: 2Ltrs.



TM - 800A  
Power: 3HP  
Cap.: 1.5Ltrs.



TM - 800  
Power: 3HP  
Cap.: 2Ltrs.



TM - 800AQ  
Power: 3HP  
Cap.: 1.5Ltrs.



Deluxe Ice Crusher  
Size: 420x200x300mm  
Power: 250W



Metal Ice Crusher  
Size: 425x200x300mm  
Power: 250W



SS Ice Crusher  
Size: 410x230x430mm  
Power: 300W



Ice Shave Machine  
Size: 375x280x435mm  
Power: 250W  
Speed: 1400 R/Min



SS Manual Ice Crusher



Bar Blender  
Cap.: 2Ltrs.  
Power: 1500W



Sound Proof Bar Blender  
Cap.: 2Ltrs.  
Power: 1800W



Milk Shake Machine  
Size: 190x160x530mm  
Power: 150W



Double Milk Shake Machine  
Size: 230x230x530mm  
Power: 150W x 2



Citrus Fruit Juicer  
Power: 250W



Centrifugal Juicer  
Power: 800W



Centrifugal Juicer (Heavy)  
Power: 370W



Sugar Cane Juicer  
Size: 480x390x780mm  
Power: 1.1Kw



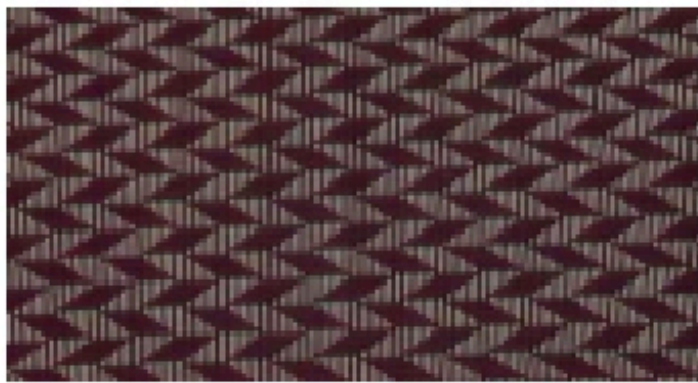
Immersion Whisk  
Whisk Size: 10"  
Power: 500W



Immersion Blender  
Rod Size: 18.5"  
Power: 500W



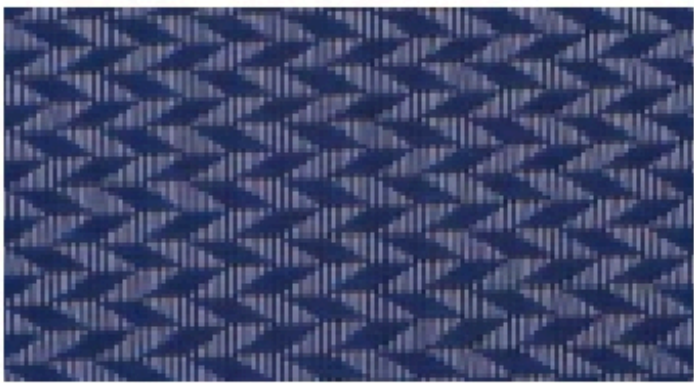
TABLE MAT



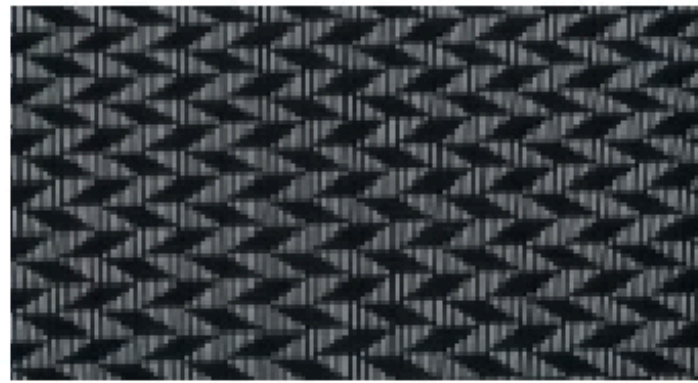
# Grass 1



# Grass 2



# Grass 3



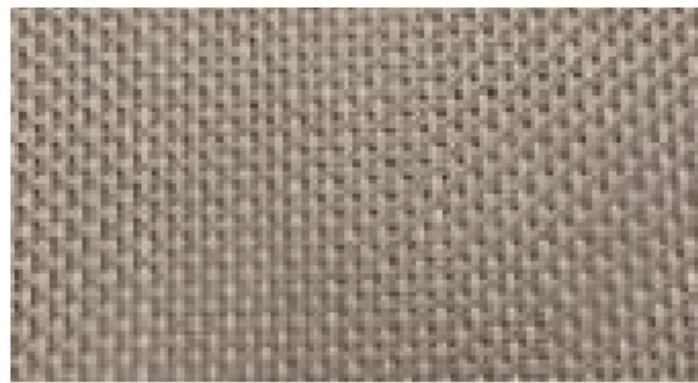
# Grass 4



# Grass 5



# Grass 6



# S002



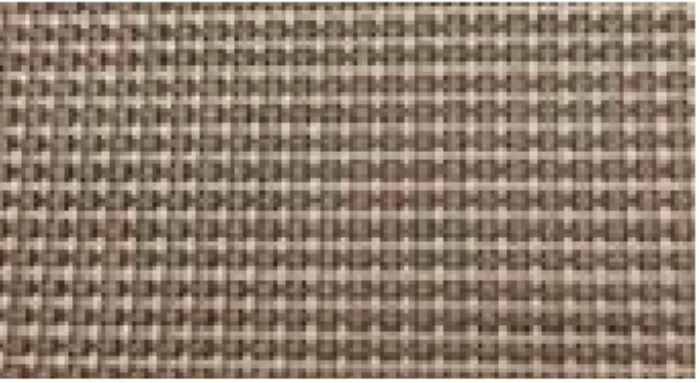
# S043



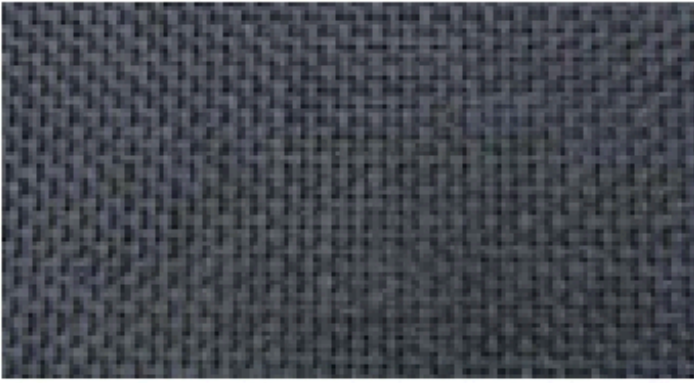
# S003



# S05+3



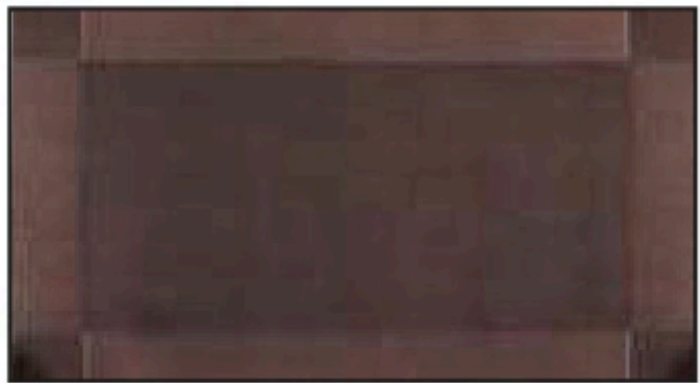
# S034



# S007



# S178-3



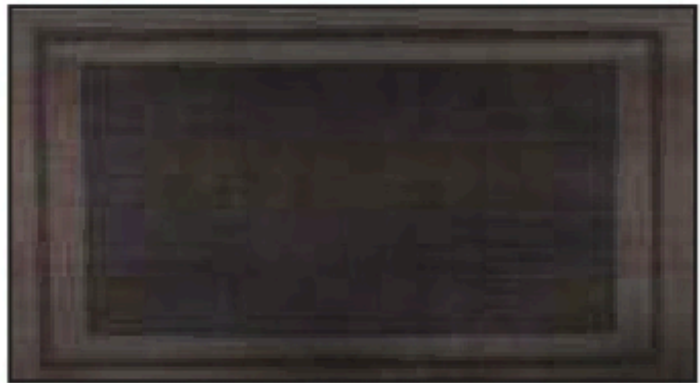
# S125



# S124



# S371-1



# S039



# S460

TRAY, CHOPPING BOARD & BASKET



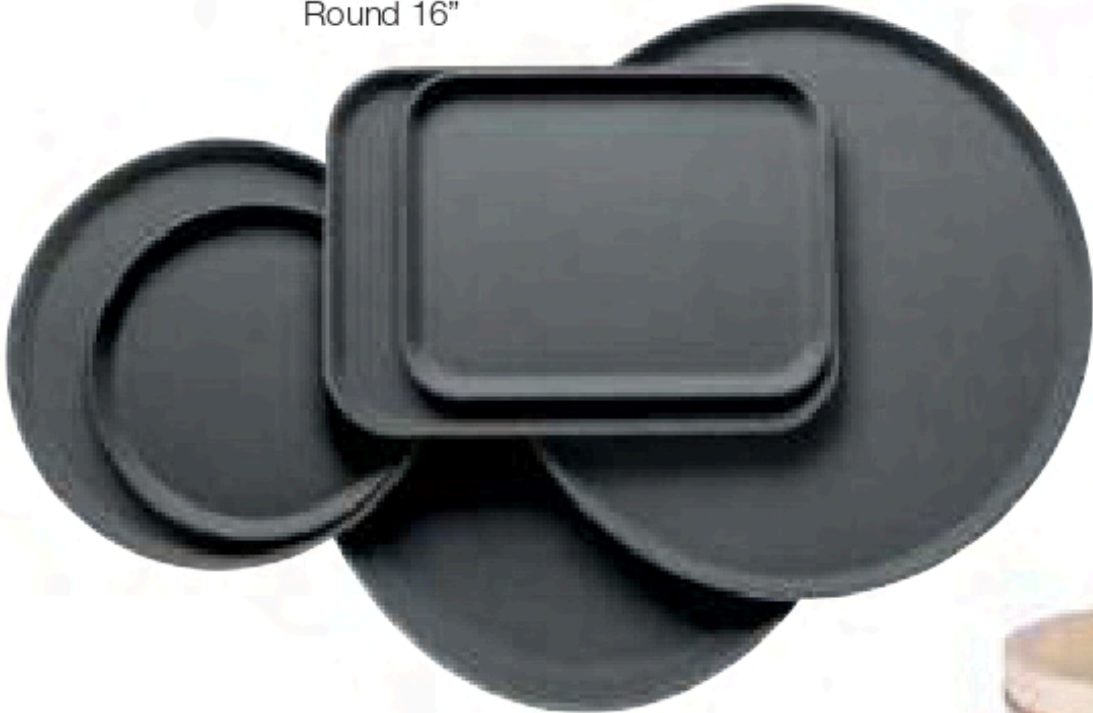
SS Rim Fiber Anti Skid Tray  
Round 14"  
Round 16"



Chopping Board ( 18"x12" )  
Thickness 21 & 50 mm



Bamboo Dim Sum Basket  
Size: Ø 5",6",7",8",10",12",14",  
16",18",20" & 22"



Fiber Anti Skid Tray ( Black )  
Round    Rectangular    Oval  
11"       12"x16"            27"  
14"       14"x18"  
16"       15"x20"  
18"       16"x22"  
          18"x26"



Dim Sum Paper  
Size: Ø 5",6",7",8",10"



Bamboo Chopping Board  
Size: 220x320x18mm  
Size: 260x360x18mm



Sushi Bowl  
Size: Ø38cm



Salad Spinner, 10Ltrs.



Salad Spinner 3Ltrs.



Chinese Broom



Bamboo Chopstick



Bamboo Sushi Mat



Round & Square Bread Basket  
Size: 200x200x70mm (Small)  
Size: 230x230x80mm (Medium)



Oval & Rectangular Bread Basket  
Size: 240x170x70mm (Small)  
Size: 270x200x80mm (Medium)



Wooden Salt &  
Pepper Miller  
Size: 4inch



Wooden Pepper Mill  
Size: 5,6,8,10inch



Bento Box  
Size: 270x210x60mm  
Size: 310x240x60mm



Round Poly Rattan Basket  
with PC Roll Cover  
Size: Ø 410x200mm



Square Poly Rattan Basket  
with PC Roll Cover  
Size: 350x330x260mm



Rectangular Poly Rattan Basket  
with PC Roll Cover  
Size: 530x330x260mm



Rectangular Poly Rattan Basket  
with New PC Cover  
Size: 530x330x260mm



# BAR ACCSSORIES



# CAST IRON PANS





# KITCHEN TOOL



# KITCHEN TOOL





# KITCHEN TOOL



# HOUSE KEEPING





# HOUSE KEEPING



Laundry Cart (X Shape)  
Size: 600x600x1060mm



Laundry Cart  
Size: 910x560x880mm



Linen Trolley  
Size: 900x650x850mm



News Paper Stand  
Size: 600x470x1500mm



Podium  
Size: 470x470x1100mm



Room Service Cart W/ Hot Case  
Cart Size: Ø 860x800 H  
Hot Case Size: 390x400x500mm



Folding Bed  
Size: 1950x780x430mm



Q Manager  
Size: 320x63x910mm



Premium Q Manager W/Rope  
Size: 320x51x1000mm



Baby Chair  
Size: 640x460x980 mm



Fiber Baby Chair  
Size: 615x580x770 mm



Wooden Tray Jack  
Size: 530x535x770 mm

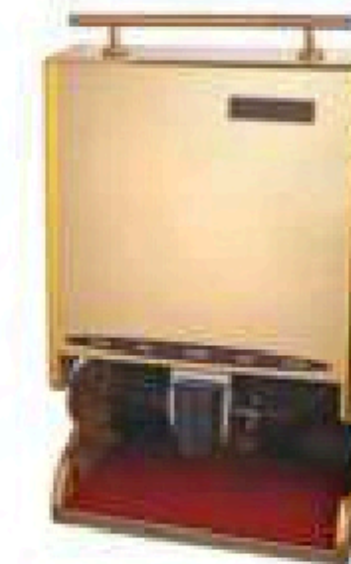


ST ST Tray Jack  
Size: 520x410x800 mm

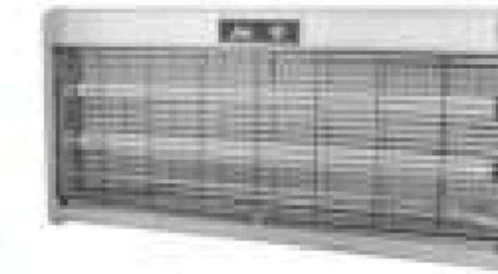
# HOUSE KEEPING & ROOM AMENITIES



Shoe Polish (Gold & Silver)  
Size: 280x370x210mm



Premium Shoe Polish (Golden)  
Size: 800x530x300mm



Fly Catcher  
Size: 610x60x270mm, 40W  
Size: 505x60x270mm, 30W  
Size: 395x60x270mm, 20W



Single Bucket Mop Wringer  
Size: 490x280x690mm  
Cap: 4Ltrs.



Double Buckets Mop Wringer  
Size: 750x410x880mm  
Cap: 3Ltrs. x 2



Clearance Trolley  
Size: 775x410x900mm



Three Tier Service Cart  
Size: 860x420x930 mm  
Size: 1070x500x990 mm



Honeyson Tea Kettle Tray Set  
Size: 385x308x225mm  
Cap: 1.2 Ltrs., 1350W



Hand Dryer  
Power: 1800W



Round PU Dust Bin  
Size: Ø225x(H)255mm



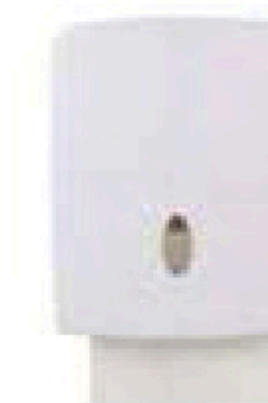
Oval PU Dust Bin  
Size: 255x165x270mm



Black Hair Dryer  
Power: 1300W



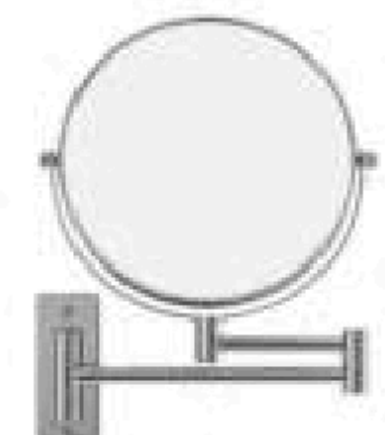
White Hair Dryer  
Power: 1300W



C Fold Dispenser



Soap Dispenser  
Cap.: 350ml  
Size: 70x10x230mm



Concave Mirror  
Size: Ø8"



# LIQUOR & LUGGAGE TROLLEY



J209 Liquor Trolley  
Size: 850x450x900mm

J207 Liquor Trolley  
Size: 750x450x900mm

J202 Liquor Trolley  
Size: 820x450x930mm

J206 Liquor Trolley  
Size: 770x400x820mm

Luggage Cart (Maharaja)  
Size: 1100x650x1900mm

Luggage Cart  
Size: 1050x610x900mm

Luggage Cart (L Shape)  
Size: 500x380x1200mm

# KITCHEN TROLLEY, OUTDOOR HEATER & FAN



SS 3 Tier Service Cart  
Size: 867x540x930 mm

Platform Trolley (Foldable)  
Size: 820x520x970 mm

Cooling Rack, 15 Tray  
Size: 475x610x1700mm

GN Pan Tray Rack, 15 Pan  
Size: 385x550x1300mm

Hanging -Electric Patio Heater  
Power: 3000W, 220V

Electric Patio Heater  
Power: 3000W, 220V  
Height: 1600 - 2100mm

Gas Patio Heater  
Height: 2210mm

Dancing Flame Patio Heater  
Height: 2210mm

Mist Fan (Black & Silver)  
Power: 260W, 220V  
Height: 2000mm  
Tank: 41Ltrs.



# INDIAN & FABRICATED EQUIPMENTS



**FOUR BURNER RANGE WITH OVEN**

Item Code	Dimensions	Burner	Power Consumption
CBO-01	36x36x36+6	T-22-65000BTU/HR	4.0 kW
CBO-02	30x30x30+6	T-22-65000BTU/HR	3.0 kW



**SINGLE BURNER**

Item Code	Dimensions	Burner	PS Ring
SB-01	24x24x24	T-35-70000BTU/HR	16x16
SB-02	30x30x24	T-35-70000BTU/HR	18x18



**TABLE TOP SINGLE BURNER**

Item Code	Dimensions	Burner	PS Ring
SP-01	20x20x12	T-35-70000 BTU/HR	12x12
SP-02	18x18x12	T-35-70000 BTU/HR	12x12



**DOSA PLATE**

Item Code	Dimensions	Burner	Capacity
HP-01	48x24x34	RV-450-70000 BTU/HR	3 Dosa
HP-02	60x30x34	RV-450-70000 BTU/HR	5 Dosa



**TWO BURNER RANGE**

Item Code	Dimensions	Burner	PS Ring
DB-01	54x30x34	T-35/G11-70000BTU/HR	18x18
DB-02	24x24x24	T-35/G11-70000BTU/HR	16x16



**THREE BURNER RANGE**

Item Code	Dimensions	Burner	PS Ring
TB-01	72x30x34	T-35/G11-70000BTU/HR	18x18
TB-02	66x24x24	T-35/G11-70000BTU/HR	16x16



**TABLE TOP CHINESE RANGE**

Item Code	Dimensions	Burner	PS Ring
TTCW-01	20x20x15	G-11-70000 BTU/HR	DIA 12
TTCW-02	18x18x15	G-11-70000 BTU/HR	DIA 12



**TABLE TOP TAWA TOP**

Item Code	Dimensions	Burner	Tawa
TTT-01	20x20x15	G-11-70000 BTU/HR	DIA 20
TTT-02	18x18x15	G-11-70000 BTU/HR	DIA 18



**CHINESE RANGE**

Item Code	Dimensions	Burner	PS Ring
CBW-1	72x30x34+18	T-35/T-22-70000BTU/HR	DIA 14/10
CBW-2	66x27x34+18	T-35/T-22-70000BTU/HR	DIA 12/09



**DOME TYPE CHINESE RANGE**

Item Code	Dimensions	Burner	PS Ring
CBW-03	72x30x34+18	T-35/M-35-70000BTU/HR	DIA 14/12



**CHAPATI PLATE WITH PUFFER**

Item Code	Dimensions	Burner	Puffer
HPP-01	48x24x34	RV-450-70000BTU/HR	12x20
HPP-02	72x24x34	RV-450-70000BTU/HR	15x24



**DOUBLE DEEP FAT FRYER WITH STORAGE**

Item Code	Dimensions	Tank Capacity	Power Consumption
DDFFS01	36x24x34+6	12 Ltr. Each	4.0 KW/HR
DDFFS02	30x24x34+6	8 Ltr. Each	3.0 KW/HR



# INDIAN & FABRICATED EQUIPMENTS



**TABLE TOP HOT CUM GRIDDLE PLATE**

Item Code	Dimensions	Burner	Type
HCGP-01	36x24x12	RV-450-70000 BTU/HR	Table Top
HCGP-02	30x24x12	RV-450-70000 BTU/HR	Table Top



**GRIDDLE PLATE**

Item Code	Dimensions	Burner	Type
GP-01	36x27x34+4	RV-450-70000 BTU/HR	Standing
GP-02	30x27x34+4	RV-450-70000 BTU/HR	Mobile



**HOT BAIN MARIE**

Item Code	Dimensions	GN Pans	Power Consumption
HBMSR-0	72x30+12x34	1/1x6 = 5Pcs	3.0 KW
HBMSR-2	60x30+12x34	1/1x6 = 4Pcs	2.0 KW



**HOT CASE COUNTER**

Item Code	Dimensions	Capacity	PS Ring
HCC-01	48x24x34+6	350 Ltr.	2.0 KW/HR
HCC-02	54x24x60+6	600 Ltr	3.0 KW/HR



**MOBILE HOT BAIN MARIE**

Item Code	Dimensions	GN Pass	Power Consumption
MHBM-01	42x24x36	1/2x4 = 3Pcs	2.0 KW
MHBM-02	48x30x36	1/3x4=9Pcs	2.0 KW



**TABLE TOP HOT BAIN MARIE**

Item Code	Dimensions	GN Pans	Power Consumption
TTHBM-0	48x18x12	1/2x4 = 4Pcs	2.0 KW
TTHBM-2	60x18x12	1/2x4 = 5 Pcs	3.0 KW



**IDLY STEAMER**

Item Code	Dimensions	Capacity	Power Consumption
IS-03	20x20x30	54 idlys	2.0 KW
IS-04	36x20x48	108 idlys	4.0 KW
IS-05	52x20x48	162 idlys	6.0 KW



**TILTING BULK COOKER**

Item Code	Dimensions	Burner	Capacity
TBC-0	36x30x42	M-IV-70000 BTU/HR	80 Ltr
TBC-2	42x36x48	M-IV-70000 BTU/HR	120 Ltr



**HOT FOOD SERVING TROLLEY**

Item Code	Dimensions	Capacity	Power Consumption
HFS01	36x24x48	34 Trays	1.0 KW/HR
HFS02	48x30x48	68 Tray	1.5 KW/HR



# INDIAN & FABRICATED EQUIPMENTS



## TILTING BRAT PAN

Item Code	Dimensions	Burner	Capacity
TBP-0	36x30x42	M-IV-70000 BTU/HR	80 Ltr
TBP-2	42x36x48	M-IV-70000 BTU/HR	120 Ltr



## MOBILE TANDOOR (GAS / CHARCOAL)

Item Code	Dimensions	Mouth opening	Mode of operations
SSC01	24x24x34	12	Charcoal & Gas
SSC02	30x30x34	14	Charcoal & Gas



## CHAPATI MAKING MACHINE

Item Code	Dimensions	Mode of operation	Capacity
CM-01	48x48x60	Chapati/hr Electricity	1000



## PANTRY FRIDGE

Item Code	Dimensions	Capacity	Compressor	Power Consumption	Temperature Range	GN Pans
PF-0	72x30x34+6	475 Ltr	Copeland-Emerson/Embraco	675 Watts	+2°C to +8°C	1/6x4 - 10 NOS



## UNDER COUNTER REFRIGERATOR

Item Code	Dimensions	Capacity	Compressor	Power Consumption	Temperature Range
UCR-0	60x27x34x12+18	300 Ltr	Copeland-Emerson/Embraco	570 Watts	+2°C to +8°C



## UNDER COUNTER BAR CHILLER

Item Code	Dimensions	Capacity	Compressor	Power Consumption	Temperature Range
UCBC-0	72x30x34+6	450 Ltr	Copeland-Emerson/Embraco	680 Watts	+0°C to +10°C



# INDIAN & FABRICATED EQUIPMENTS



### TWO DOOR REFRIGERATOR

Item Code	Dimensions	Capacity	Compressor	Power Consumption	Temperature Range
TDR-0	30x30x84	600 Ltr	Copeland-Emerson/Embraco	680 watts	+0°C to +10°C



### FOUR DOOR REFRIGERATOR

Item Code	Dimensions	Capacity	Compressor	Power Consumption	Temperature Range
FDR-0	48x30x84	1100 Ltr	Copeland-Emerson/Embraco	725 Watts	+0°C to +10°C



### SIX DOOR REFRIGERATOR

Item Code	Dimensions	Capacity	Compressor	Power Consumption	Temperature Range
SDR-0	78x30x84	1800 Ltr	Copeland-Emerson/Embraco	1200 Watts	+0°C to +10°C



### WATER COOLER

Item Code	Dimensions	Capacity Cooling	Capacity Storage	Power Consumption
WC-01	22x22x48	40 Ltr	80 Ltr	430 Watts
WC-02	24x24x56	60 Ltr	60 Ltr	680 Watts
WC-03	30x24x60	150 Ltr	150 Ltr	1300 Watts
WC-04	32x26x66	150 Ltr	300 Ltr	1300 Watts
WC-05	32x28x66	200 Ltr	250 Ltr	1900 Watts
WC-06	32x32x72	300 Ltr	300 Ltr	2100 Watts



# INDIAN & FABRICATED EQUIPMENTS



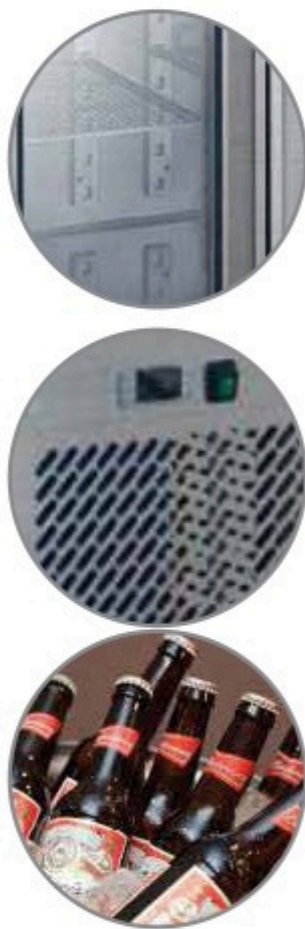
## SIX DRAWER UNDER COUNTER REFRIGERATOR

Item Code	Dimensions	Capacity	Compressor	Power Consumption	Temperature Range	GN Pass
SDUCR-0	76x30x34+6	490 Ltr.	Copeland-Emerson/Emlaco	675 Watts	+2°C to +8°C	1/1, 1/2, 1/3
SDUCR-2	56x30x34+6	340 Ltr.	Copeland-Emerson/Emlaco	500 Watts	+2°C to +8°C	1/1, 1/2, 1/3



## COLD ROOM

Item Code	Dimensions	Capacity Cooling	Compressor	Power Consumption	Temperature Range
BR-01	3000x2400x2500	1500BTUS/HR	Copeland-Emerson/Emlaco	600 watts	+2°C to +8°C
BR-02	3000x2400x2500	7000BTUS/HR	Copeland-Emerson/Emlaco	500 Watts	+2°C to +8°C



## BAR REFRIGERATOR

Item Code	Dimensions	Capacity	Compressor	Power Consumption	Temperature Range
BR-01	72x24x34	400 Ltr	Copeland-Emerson/Emlaco	600 watts	+2°C to +8°C
BR-02	54x24x34	300 Ltr	Copeland-Emerson/Emlaco	500 Watts	+2°C to +8°C
BR-03	36x24x34	200 Ltr	Copeland-Emerson/Emlaco	450 Watts	+2°C to +8°C





# INDIAN & FABRICATED EQUIPMENTS



**TABLE WITH TWO UNDER SHELVES**

Item Code	Dimensions	Tubular legs
WT-01	30x30x34	Round/Square
WT-02	48x30x34	Round/Square



**CLEAN DISH TABLE**

Item Code	Dimensions	Tubular legs
CDT -01	48x24x34+6	Round/Square
CDT -02	60x24x34+6	Round/Square



**DIRTY DISH LANDING TABLE**

Item Code	Dimensions	Tubular legs
DLT 03	48x24x34+6	Round/Square
DLT 04	72x24x34+6	Round/Square



**WALL MOUNTED CABINET**

Item Code	Dimensions	Shelves
WMC-03	48x15x24	02
WMC-04	36x15x24	02



**SPREADER TABLE**

Item Code	Dimensions	Tubular legs
SP101	30x30x34+6	Round/Square
SP102	48x30x34+6	Round/Square



**WORK TABLE WITH GRANITE TOP**

Item Code	Dimensions	Tubular legs
WTGP-01	36x24x34	Round/Square
WTGP-01	48x24x34	Round/Square



**POT WASH SINK**

Item Code	Dimensions	Sink dimensions
PWS-01	24x24x34+6	16x16x14
PWS-02	36x30x34+6	26x22x18



**TABLE WITH SINK**

Item Code	Dimensions	Sink dimensions
ST-03	54x24x34+6	16x16x10
ST-04	48x24x34+6	16x16x10



**WORKING TABLE**

Item Code	Dimensions	Tubular legs
WT-03	84x24x34+6	Round/Square
WT-04	72x24x34+6	Round/Square



**WORK TABLE COUNTER**

Item Code	Dimensions	Shelves
WTC-01	48x24x34	02
WTC-02	60x24x34	02



**WORK TABLE COUNTER WITH DOORS**

Item Code	Dimensions	Shelves
WTCD-01	48x24x34	02
WTCD-02	60x24x34	02



# INDIAN & FABRICATED EQUIPMENTS



## BUSSING CART

Item Code	Dimensions	Shelves
BT-01	36x24x36	02



## TEA SERVICE TROLLEY

Item Code	Dimensions	Dawer Siz
TST01	0236x20x34+6	18x18x7



## BAR SINK WITH TABLE

Item Code	Dimensions	Sink dimensions	Drawer dimensions
BST01	54x24x34+4	16x16x10	24x20x10
BST02	48x24x34+6	16x16x10	24x20x10



## THREE SINK UNIT

Item Code	Unite dimensions	Sink dimensions
TST03	72x30x34+6	20x20x12
TST04	66x27x34+6	18x18x12



## MASALA TROLLEY

Item Code	Dimensions	Dawer Siz
MT-01	24x24x30	1/6x4=9Pcs.
MT-02	18x18x30	1/6x4=6Pcs.



## PLATFORM TROLLEY

Item Code	Dimensions	Platform
PT-01	36x24x8+30	M.S / S.S
PT-02	48x24x8+30	1/6x4=6Pcs.



## DINING TABLE

Item Code	Dimensions	Sitting capacity
DT-01	48x32x30	04 Seater
DT-02	68x32x30	06 Seater
DT-03	90x32x30	08 Seater
DT-04	112x32x30	10 Seater
DT-05	134x32x30	12 Seater



## OVERHEAD SHELVES

Item Code	Unit dimensions (siz hes)	es are in inc es are in inc
OHS-01	60x12 0815	
OHS-02	48x12 48x1	



## STAINLESS STEEL DUSTBIN

Item Code	Unit dimensions (siz hes)	es shelv
SSD-01	24x24x42	01
SSD-02	30x24x42	01



## LUGGAGE TROLLEY

Item Code	Dimensions	Platform
LT-01	42x30x6+66	M.S / S.S



# INDIAN & FABRICATED EQUIPMENTS



**GN PAN TROLLEY**

Item Code	Dimensions	GN Pans
GNPT01	15x22x72	1/1x6 = 5Pcs.



**TRAY RACK TROLLEY**

Item Code	Dimensions	Capacity
TRT-01	18x24x66	15 Trays
TRT-02	20x24x66	15 Trays



**STORAGE RACK**

Item Code	Dimensions	Shelves
ST-01	48x24x72	05
ST-02	36x18x66	04



**CLEAN DISH RACK**

Item Code	Dimensions	Shelves
CDR-01	36x18x66	04
CDR-02	48x24x66	04



**ALUMINUM RACK**

Item Code	Dimensions	Shelves
AR-01	42x20x72	05
AR-02	20x24x66	24



**POT RACK**

Item Code	Dimensions	Shelves
PR-01	36x18x66	04
PR-02	48x24x60	03



**VEGETABLE RACK**

Item Code	Dimensions	Shelves
VR-01	36x18x66	04
VR-02	48x24x66	04



**PLATE RACK**

Item Code	Dimensions	Plates	Shelves
PR-01	48x24x72	222 Plates	04
PR-02	36x22x72	166 Plates	04



# INDIAN & FABRICATED EQUIPMENTS



## WET GRINDER

Item Code	Capacity	Motor	Power Consumption
WR-01	5 Ltr.	0.5 HP	380 Watts
WR-02	10 Ltr.	1 HP	746 Watts
WR-03	15 Ltr.	2 HP	1500Watts
WR-04	20 Ltr.	2 HP	1500Watts



## DOUGH KNEADER

Item Code	Capacity	Motor	Power Consumption
DK-01	10 KG	1 HP	746 Watts
DK-02	20 KG	2 HP	1500 Watts
DK-03	25 KG	2.5HP	1880 Watts
DK-04	50 KG	5HP	3600 Watts



## EXHAUST HOOD

Item Code	Dimension
EH - 0	72x36x20
EH - Q	96x42x20



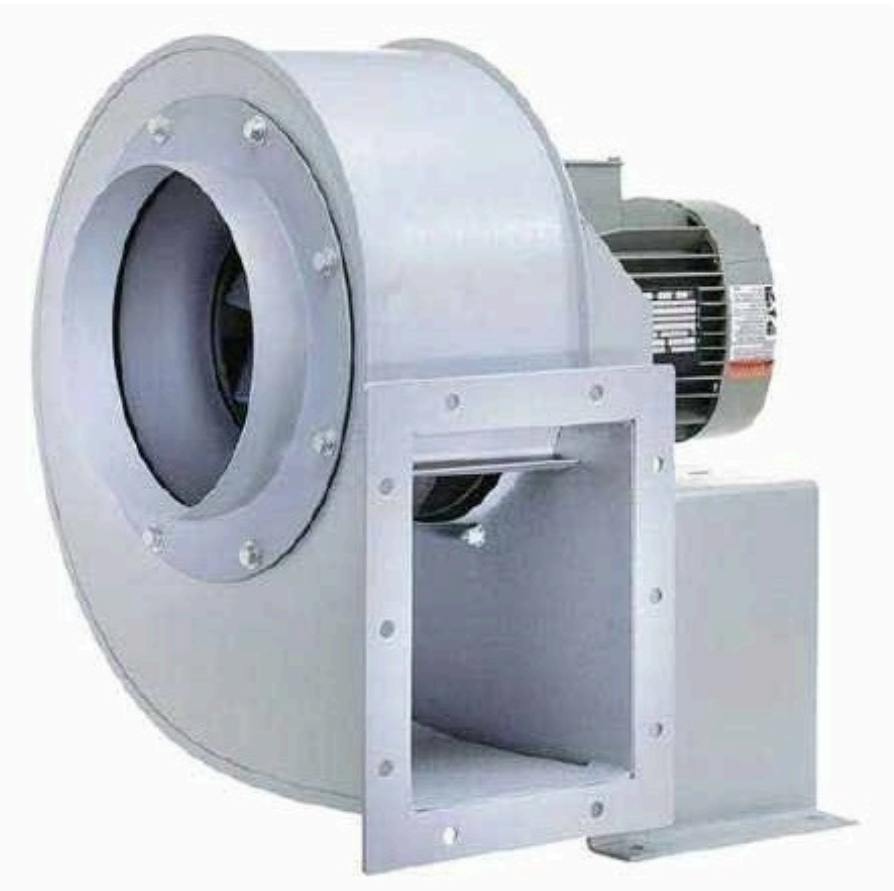
## PULVERIZER

Item Code	Capacity	Power Consumption
GM-01	1HP	746 Watts
GM-02	3HP	2.24 KW
GM-03	5HP	3.73 KW



## POTATO PEELER

Item Code	Capacity	Motor	Power Consumption
PP-01	5 KG	0.5HP	380 Watts
PP-02	10 KG	1HP	746 Watts
PP-03	15 KG	2HP	1500 Watts
PP-04	20 KG	2HP	1500 Watts



## CENTRIFUGAL EXHAUST BLOWER

Item Code	Capacity	Motor Make	Motor HP
CEB-0	10000 CFM	Crompton / ABB	5HP/1440 RPM
CEB-2	12000 CFM	Crompton / ABB	7.5HP/1440 RPM
CEB-3	15000 CFM	Crompton / ABB	10HP/1440 RPM
CEB-04	20000 CFM	Crompton / ABB	15HP/1440 RPM



## TILTING WET MASALA GRINDER

Item Code	Capacity	Motor	Power Consumption
TWG-01	10 Ltr.	1 HP	750 Watts
TWG-02	20 Ltr.	2 HP	1500Watts



## VEGETABLE WASHER

Item Code	Dimension	Capacity
PP-01	2150x1340x1150	85 - 90 KG
PP-02	1800x850x1025	45 - 50 KG



## FRESH AIR CENTRIFUGAL BLOWER UNIT

Item Code	CFM Capacity	Motor Capacity	Motor RPM	Water Pump	Volt Phase HZ	Motor Make
FA-01	5000	3.0 KW	1440	0.25 HP	440 Volts-3 Phas50Hz	CROMPTON/ABB
FA-02	8000	5.0 KW	1440	0.25 HP	440 Volts-3 Phas50Hz	CROMPTON/ABB
FA-03	10000	7.5 KW	1440	0.50 HP	440 Volts-3 Phas50Hz	CROMPTON/ABB
FA-04	12000	7.5 KW	1440	0.50 HP	440 Volts-3 Phas50Hz	CROMPTON/ABB
FA-05	15000	10.0 KW	1440	0.75 HP	440 Volts-3 Phas50Hz	CROMPTON/ABB
FA-06	20000	15.0 KW	1440	1.0 HP	440 Volts-3 Phas50Hz	CROMPTON/ABB